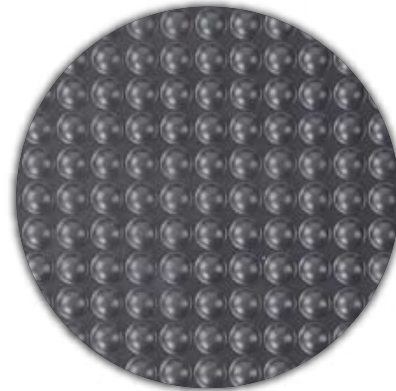
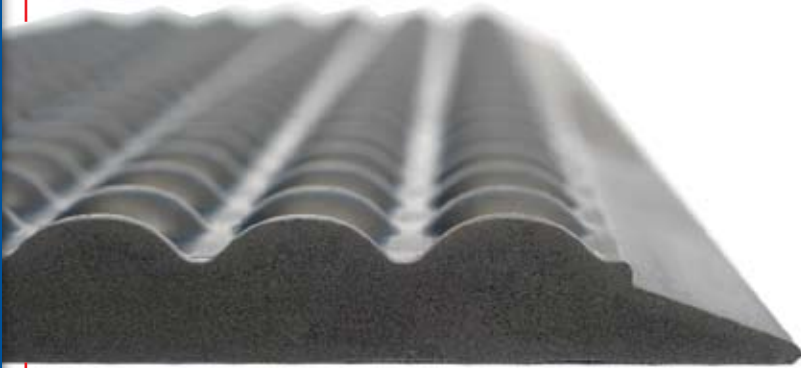


*The Basic Bubble is a lower-density polyurethane material with an ergonomic profile. This bubble mat is designed for dry, non-critical environments while reducing trip hazards, body aches, quality issues and sick leaves. No bubble matting available delivers as much relief and comfort at this price.*



### Unmatched Safety Features

- Molded beveled edges
  - They will never curl up, eliminating trip hazards
- Any size, any shape, always in one piece
  - No overlapping or worn-out connecting mats, also eliminating trip hazards

### Highest Quality

- Not only anti-fatigue, but also true ergonomic benefits
- Unique ergonomic designs, eliminating and preventing common problems encountered in standing environments, by stimulating the body to increase blood circulation and alertness, reducing sick leaves, workers' compensation and quality issues.

### The Basic Bubble Advantage

- Solid mat throughout, no hollow bubbles that collapse.
- Silicone & latex-free

## 3-Year Warranty

All Ergomat product lines are conditionally warranted against normal usage\* 24 hours a day, 7 days a week. The warranty does not cover damage caused by the mat being dragged or pulled from a heavy load or items being pushed or dragged across the product, such as skids or pallets. The warranty against chemicals, oils, liquids, or other matter differs with the type of mat. Please consult your dealer or an Ergomat Rep to select the correct mat for your environment. The warranty period starts from the date of purchase. The warranty only covers the replacement of the product, no direct or indirect costs are covered.

\* It is considered normal usage when a person stands or walks on the Ergomat with regular footwear in an environment where the temperature is under 25° C (77° F) and the humidity is below 80%.

# ERGOMAT

# ERGOMAT® Basic Bubble

<b>Properties</b>	<b>Standard</b>	<b>ERGOMAT Basic Bubble</b>
<b>Material</b>		Foamed Polyurethane
<b>Color</b>		Anthracite
<b>Weight</b>		2100 g +/- 50 g // 4.63 lbs +/- 0.1lbs
<b>Length without beveled edges</b>		90 cm +/- 1% // 35.5" +/- 0.38"
<b>Width without beveled edges</b>		60 cm +/- 1% // 23.5" +/- 0.38"
<b>Thickness</b>		15 mm // 0.625"
<b>Density</b>	ISO 2781	330 kg/m <sup>3</sup> +/- 10 %
<b>Hardness</b>	DIN 53505	18-28 Sh A
<b>Abrasion Load = 5 N</b>	ISO 46 49 (5 N)	800 mm <sup>3</sup> // 31.5 in <sup>3</sup>
<b>Breaking point / tensile strength</b>	EN ISO 527-1	1 Mpa
<b>Elongation at break</b>	EN ISO 527-1	200%
<b>Tearing strength</b>	ASTM D 624	1,5 N/mm
<b>Electrical resistance Surface point to point % 50 RH</b>	IEC-61340-4-1/ ESD STM7.1-2001	> 20 x 10 <sup>9</sup> Ω
<b>Thermal properties</b> Minimum use Maximum use Maximum short duration	The ergonomic properties remain	0°C // 32°F 80°C // 176°F 120°C // 248°F
<b>UV-resistance</b>		Inferior
<b>Cleanroom application</b>	EN ISO 14644-1	Not tested
<b>Warranty</b>		3 years